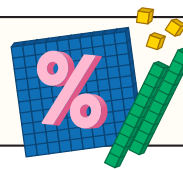
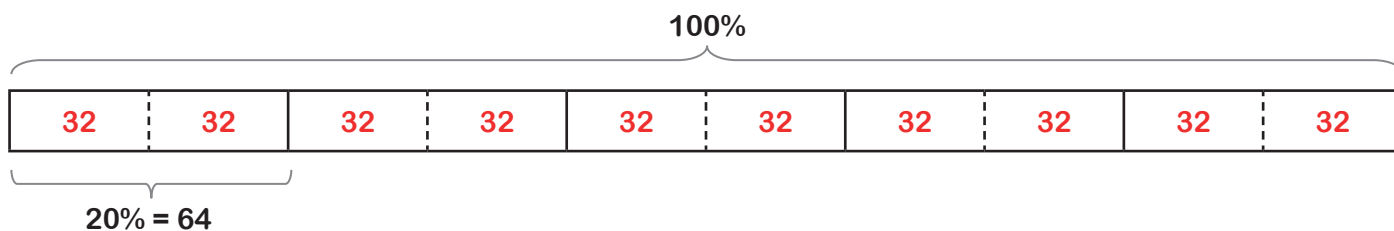


Reverse Percentages - Using a Bar Model (A) **ANSWERS**



Section A

If you know that 20% of a number is 64, what else do you know?
Use the bar model to help you answer the prompts below.



40% = 128	60% = 192	80% = 256	100% = 320
10% = 32	5% = 16	1% = 3.2	

Can you find any more?

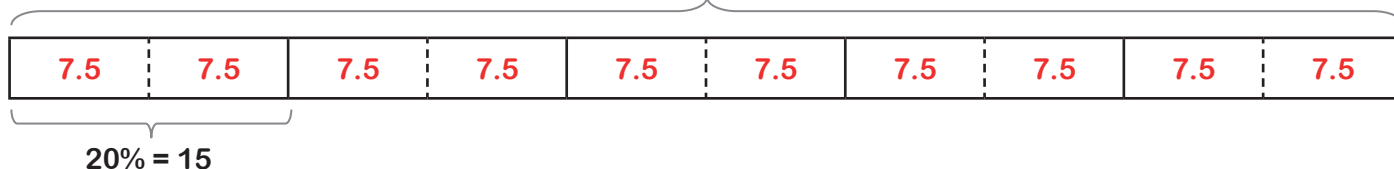
Answers will vary

Section B

Use the given percentages and the bar models below to find 100% (the whole/original amount).

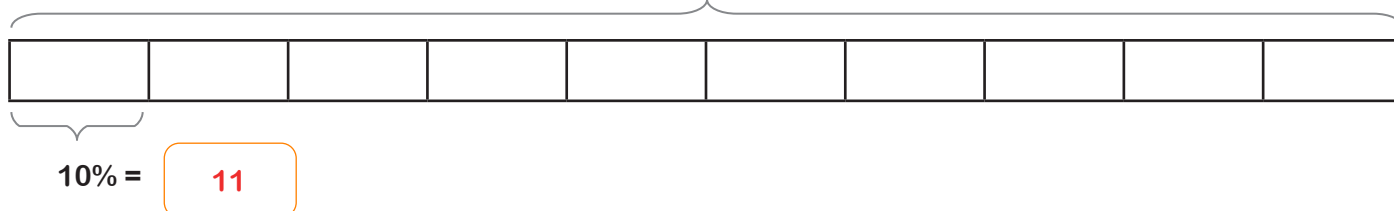
1) 20% = 15

100% = **75**



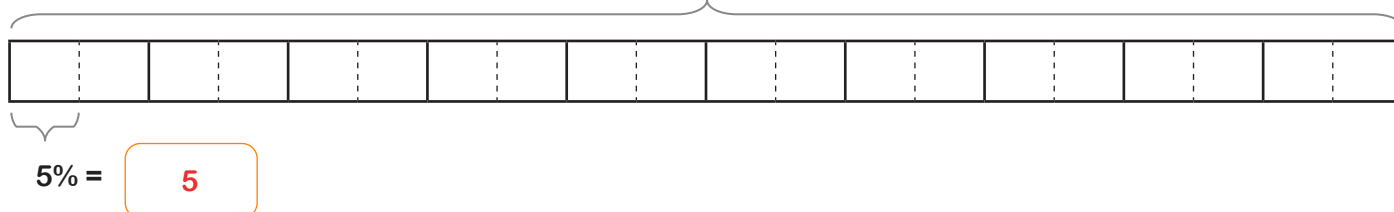
2) 10% = 11

100% = **110**

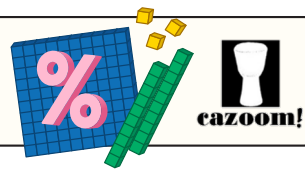


3) 5% = 4

100% = **80**

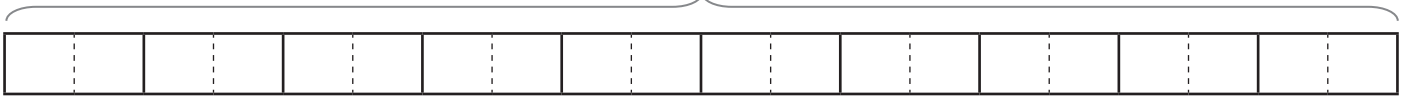


Reverse Percentages - Using a Bar Model (A) **ANSWERS**



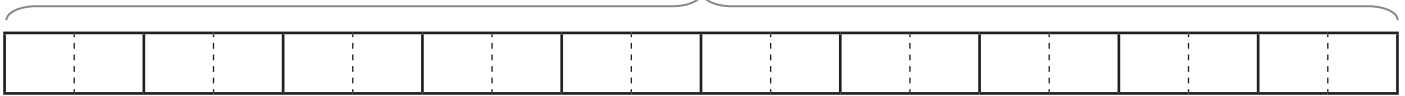
4) $25\% = 32.5$

$100\% = 130$



5) $40\% = 18$

$100\% = 45$



6) $75\% = 45$

$100\% = 60$



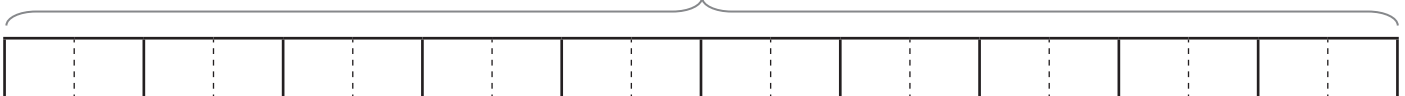
7) $30\% = 81$

$100\% = 270$



8) $55\% = 132$

$100\% = 240$



9) $72\% = 162$

$100\% = 225$

