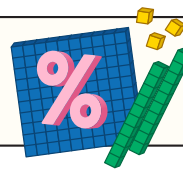


Percentage Decrease - Using a Bar Model

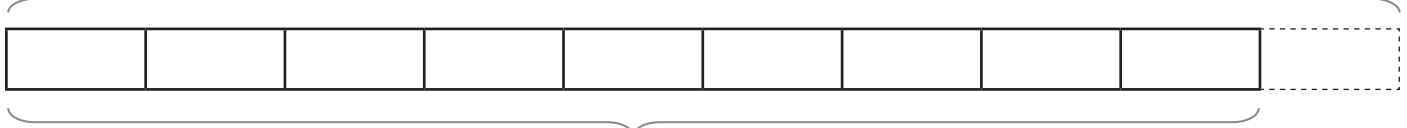
ANSWERS



1) Decrease 50 by 10% =

45

100% = 50



90% =

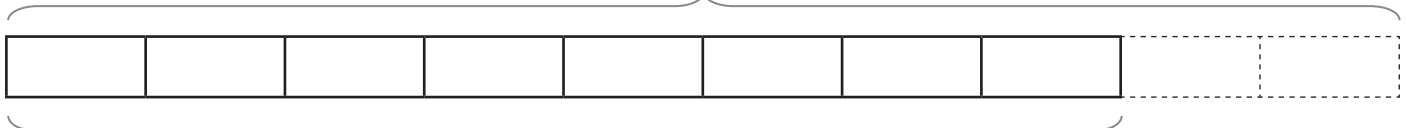
45

2) Decrease 80 by 20% =

64

100% =

80

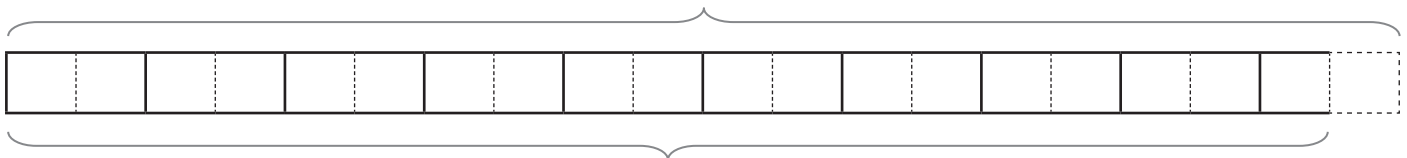


80% =

64

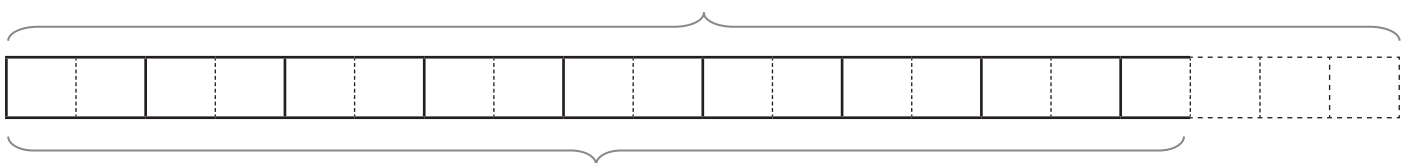
3) Decrease 120 by 5% =

114



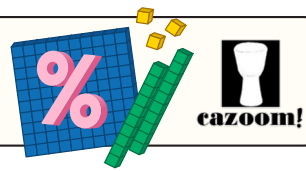
4) Decrease 70 by 15% =

59.5

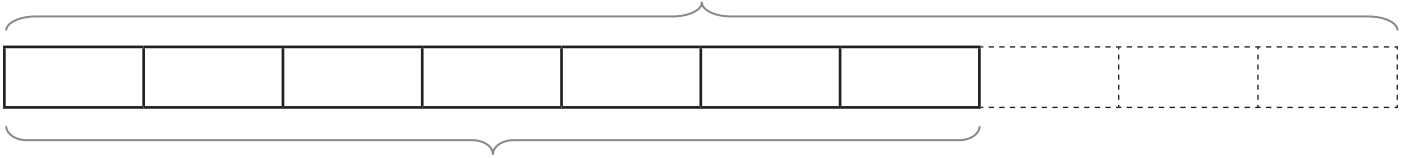


Percentage Decrease - Using a Bar Model

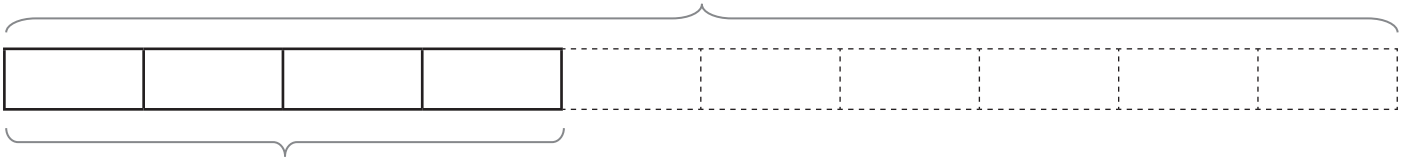
ANSWERS



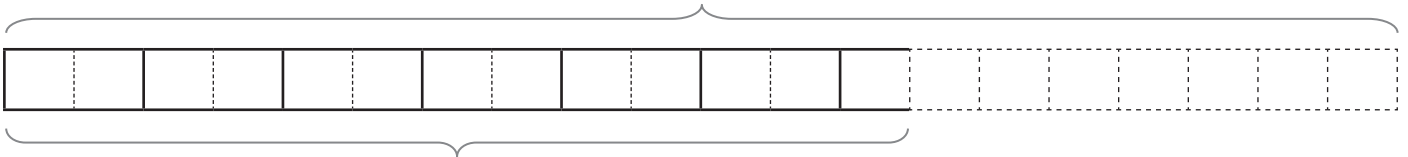
5) Decrease 340 by 30% = **238**



6) Decrease 28 by 60% = **11.2**



7) Decrease 260 by 35% = **169**



8) Decrease 54 by 25% = **40.5**

Draw your own bar model to answer this question.